

BALLOT

Mark a cross (X) in the square after your choice, and sign your name at bottom of ballot.

1. A MONUMENT (which may include shaft, arch or statuary group). The particular design to be worked out by the Committee of 25 with the architect, and the design selected to be reported back to the Committee of 250 before final adoption.
2. A MONUMENT PLUS A BUILDING, not for utilitarian purposes, but to house trophies of war with other matters closely related thereto. The particular design of monument and building is to be worked out by the Committee of 25 with the architect, and the design selected to be reported back to the Committee of 250 before final adoption.
3. A MONUMENTAL BUILDING WITHOUT SHAFT, not for utilitarian purposes, but to house trophies of war, with other matters closely related thereto. The particular design is to be worked out by the Committee of 25 with the architect, and the design selected to be reported back to the Committee of 250 before final adoption.
4. A MEMORIAL BUILDING WITH SHAFT OR OTHER MONUMENTAL FEATURE, for utilitarian purposes, and which may include the idea of auditorium, orchestra hall, art gallery, public forum or community house, with opportunity for sculpture and painting, and may be a repository for war trophies and records. The particular design of monument and building is to be worked out by the Committee of 25 with the architect, and the design selected to be reported back to the Committee of 250 before final adoption.
5. A MEMORIAL BUILDING WITHOUT SHAFT OR OTHER MONUMENTAL FEATURE, for utilitarian purposes, and which may include the idea of auditorium, orchestra hall, art gallery, public forum or community house, with opportunity for sculpture and painting and may be a repository for war trophies and records. The particular design is to be worked out by the Committee of 25 with the architect, and the design selected to be reported back to the Committee of 250 before final adoption.
6. A MEMORIAL UNIVERSITY, PLUS A MONUMENT. The particular design is to be worked out by the Committee of 25 with the architect, and the design selected to be reported back to the Committee of 250 before final adoption.
7. A MEMORIAL UNIVERSITY, WITHOUT MONUMENT. The particular design is to be worked out by the Committee of 25 with the architect, and the design selected to be reported back to the Committee of 250 before final adoption.

(Sign ballot here)

Fig. 1. Ballot. ("Minutes," 177).

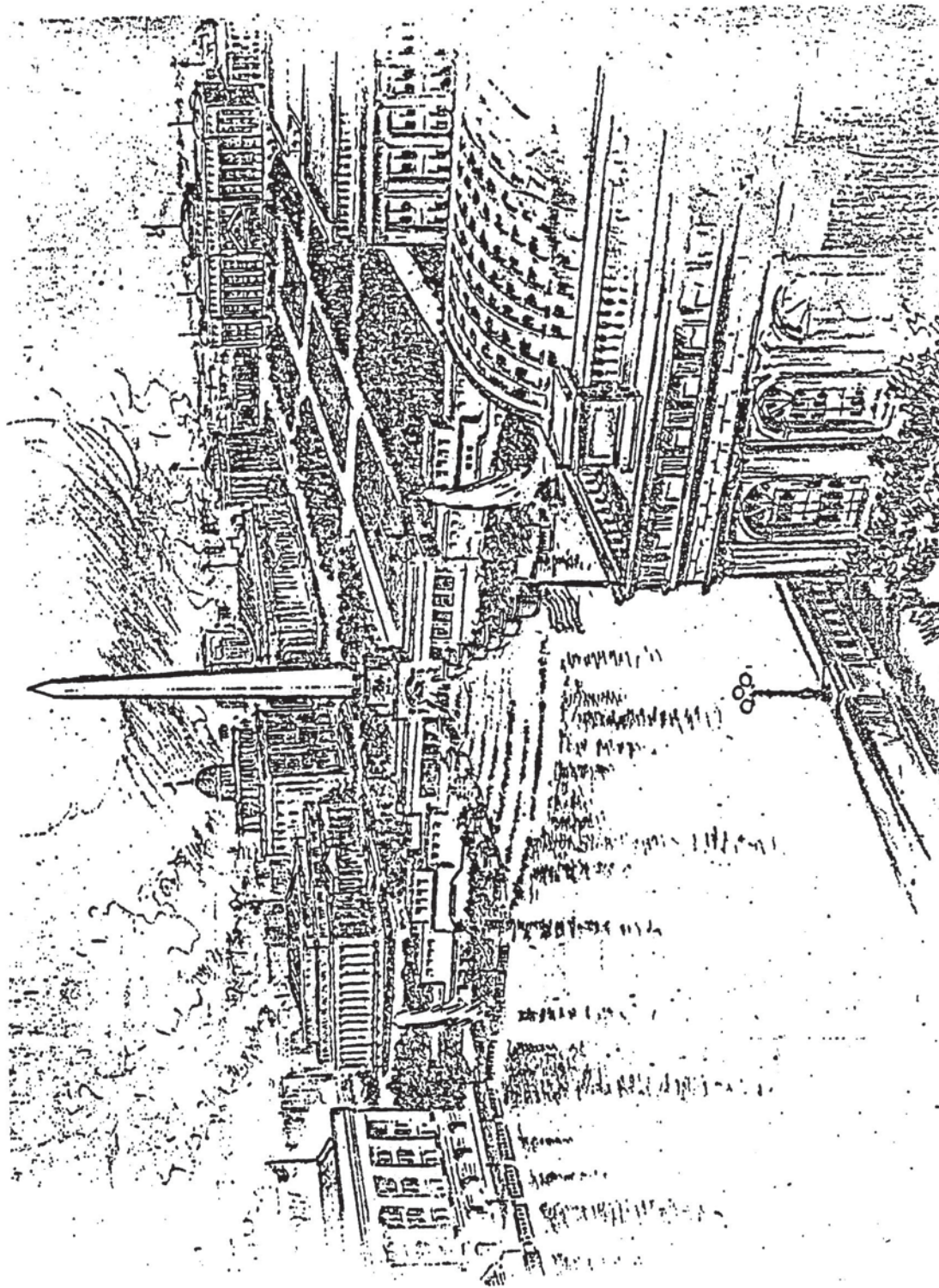


Fig. 2. Drawing "WHAT THE LIBERTY MEMORIAL MEANS TO KANSAS CITY." (Kansas City Times, 22 October 1919).

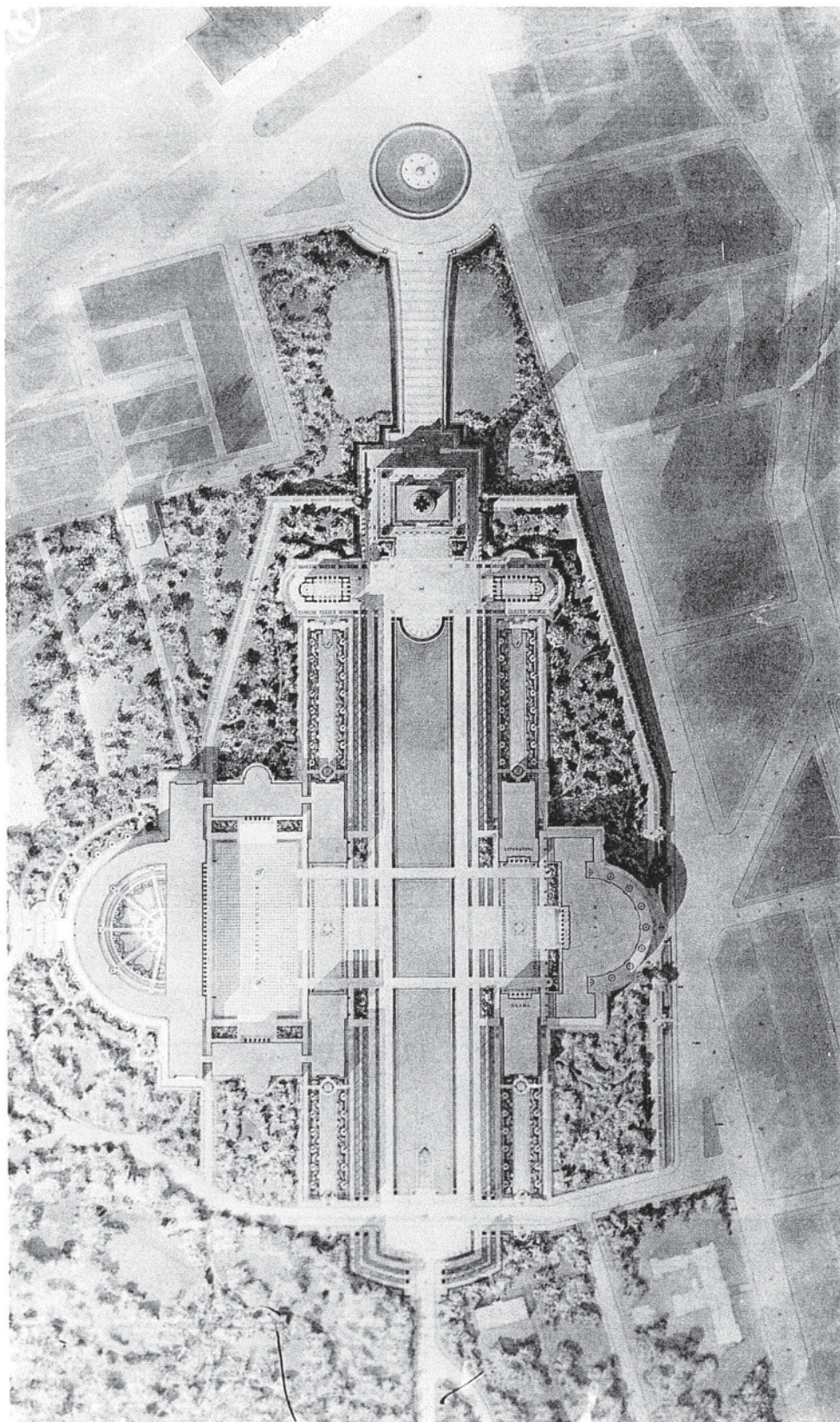


Fig. 4. Magonigle, Liberty Memorial, General Plan, 1921. Competition Drawing.

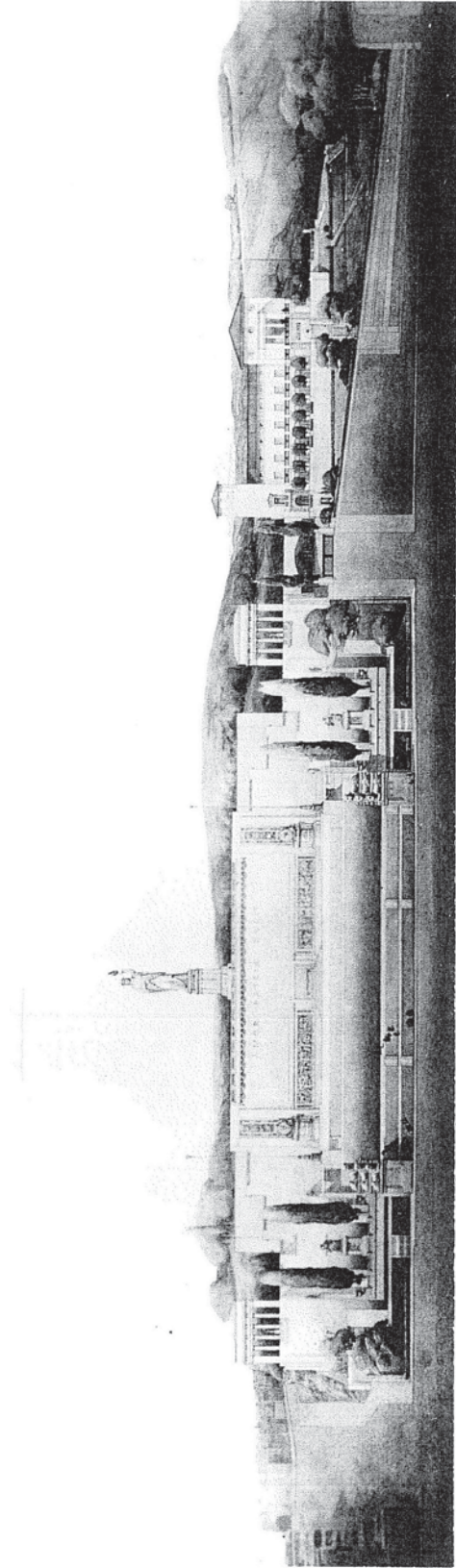


Fig. 5. Cret and Zantzinger, Borie & Medary, Liberty Memorial, Front Elevation, 1921.
Competition Drawing (Second Place).

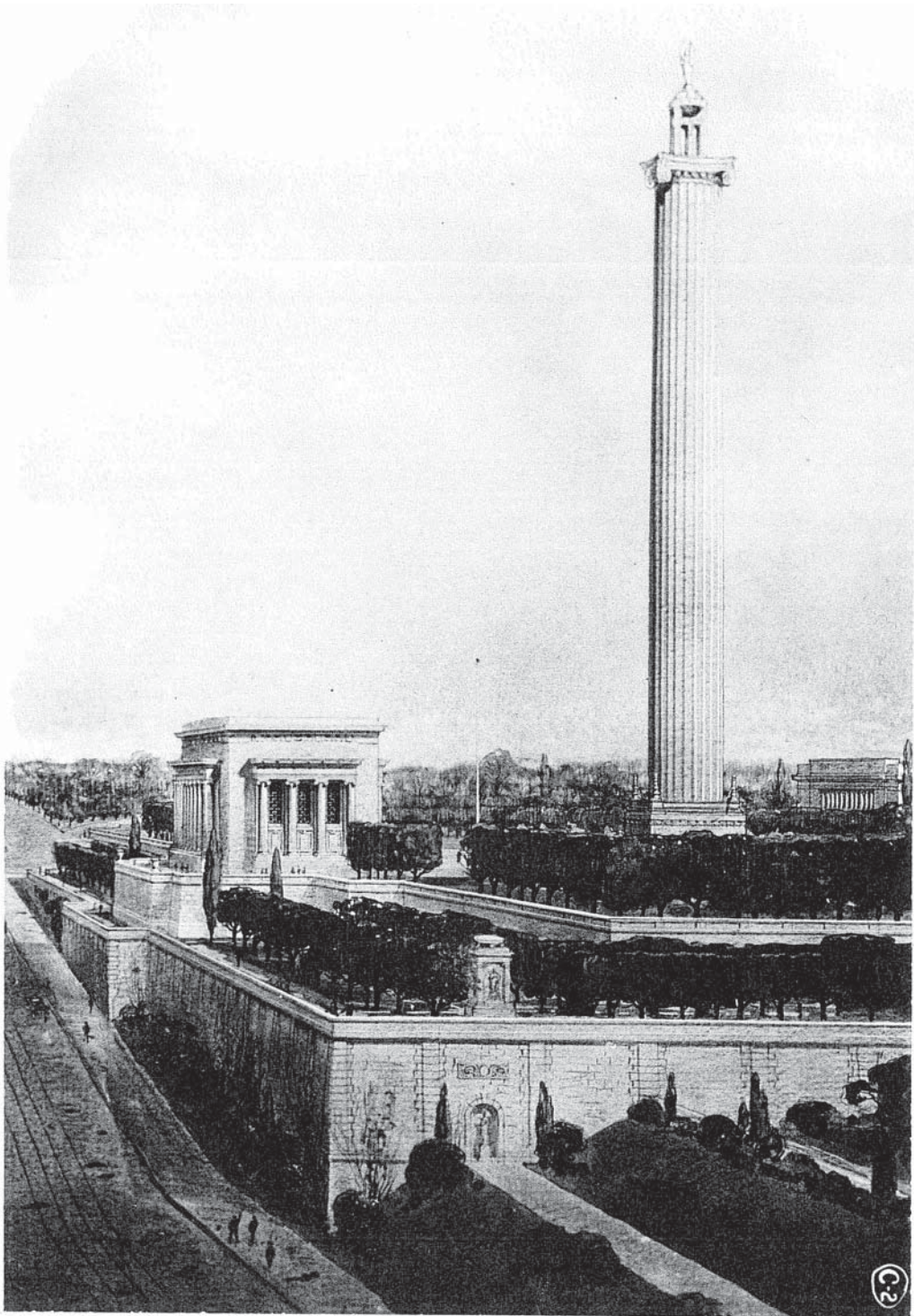


Fig. 7. Greenebaum, Hardy & Schumacher, Liberty Memorial, Perspective, 1921. Competition Drawing (Third Place).

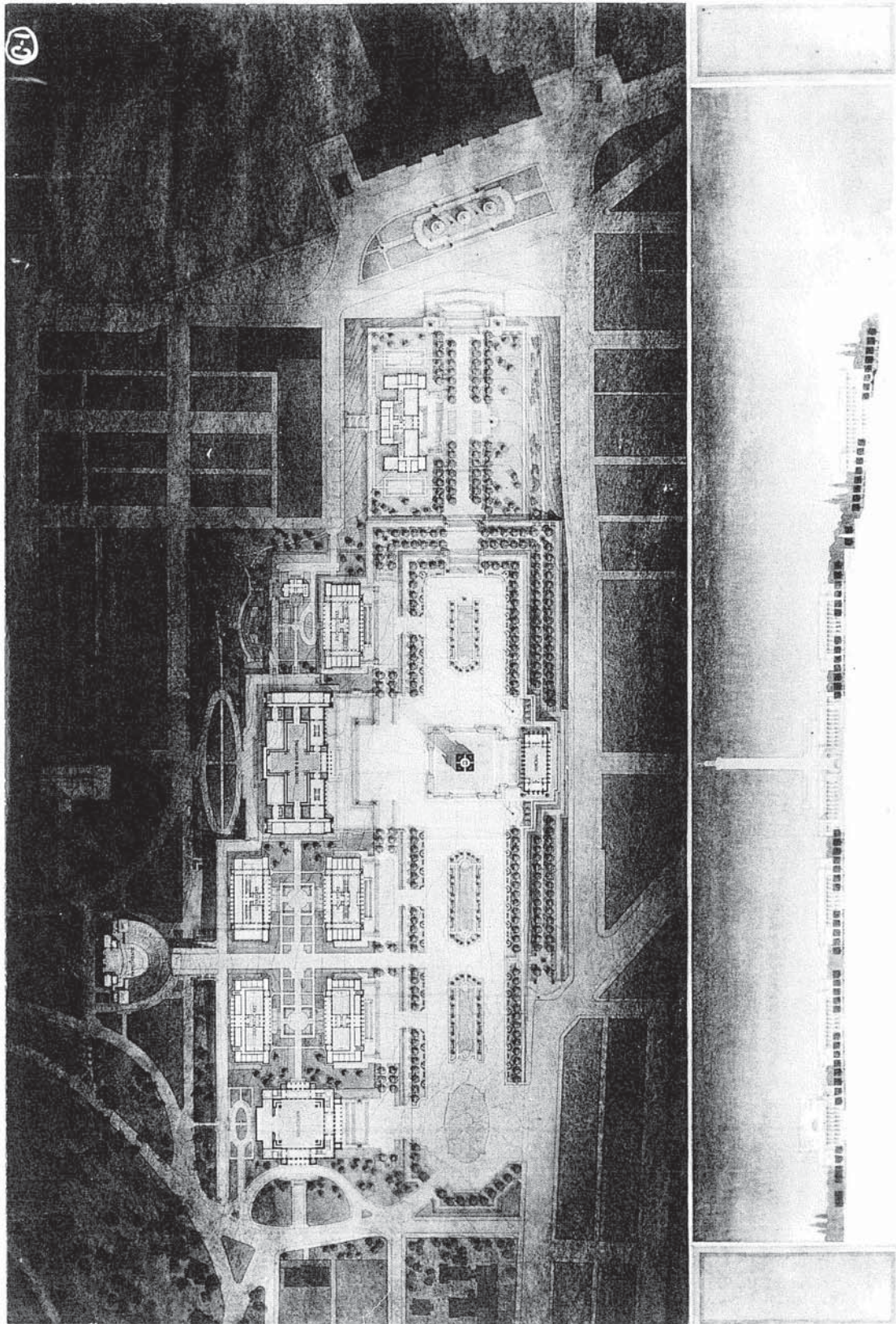


Fig. 8. Greenebaum, Hardy & Schumacher, Liberty Memorial, General Plan, 1921. Competition Drawing.

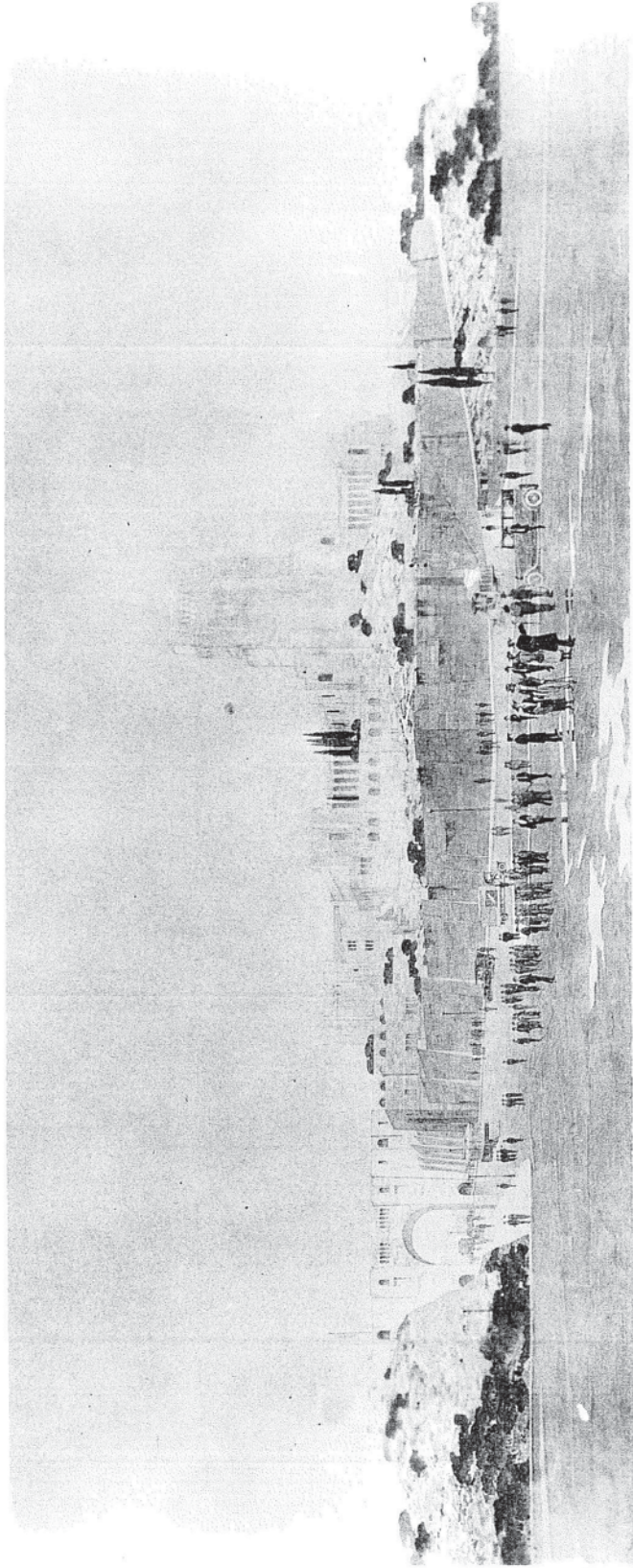


Fig. 9. Goodhue, Liberty Memorial, Perspective, 1921. Competition Drawing (Fourth Place).

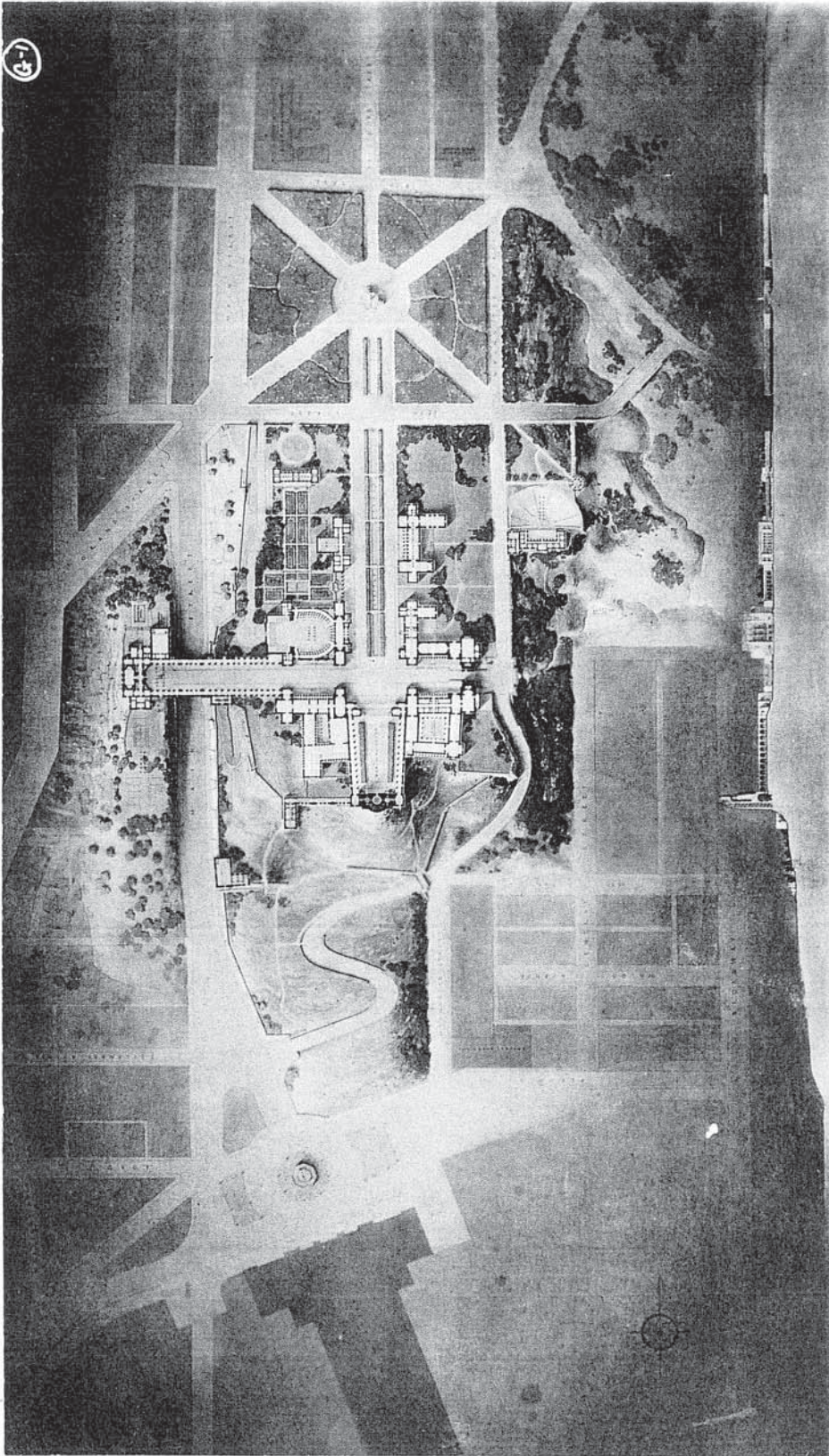


Fig. 10. Goodhue, Liberty Memorial, General Plan, 1921. Competition Drawing.

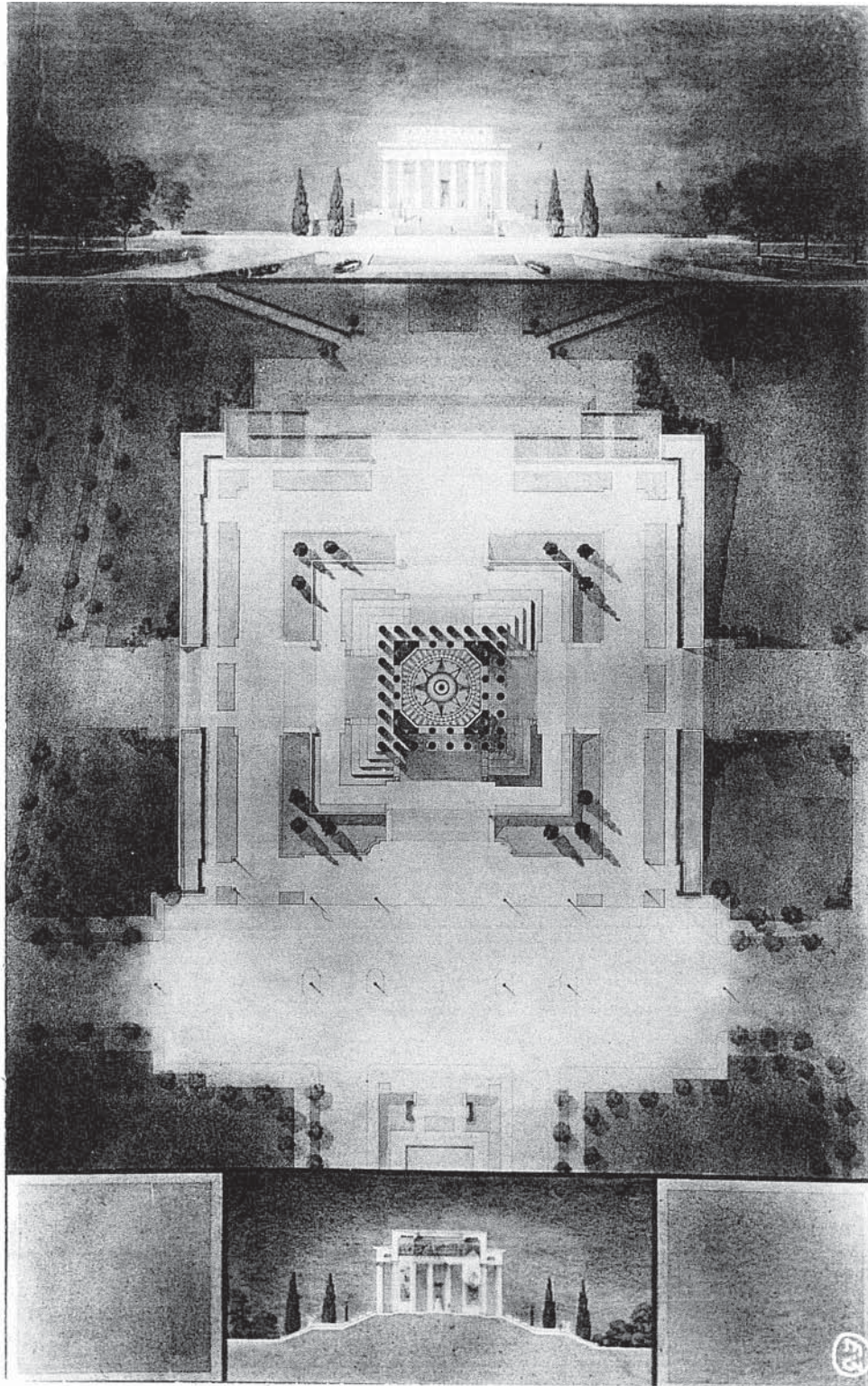


Fig. 11. Keene & Simpson, Liberty Memorial, Front Elevation; General Plan; and Perspective, 1921. Competition Drawings (Fifth Place).

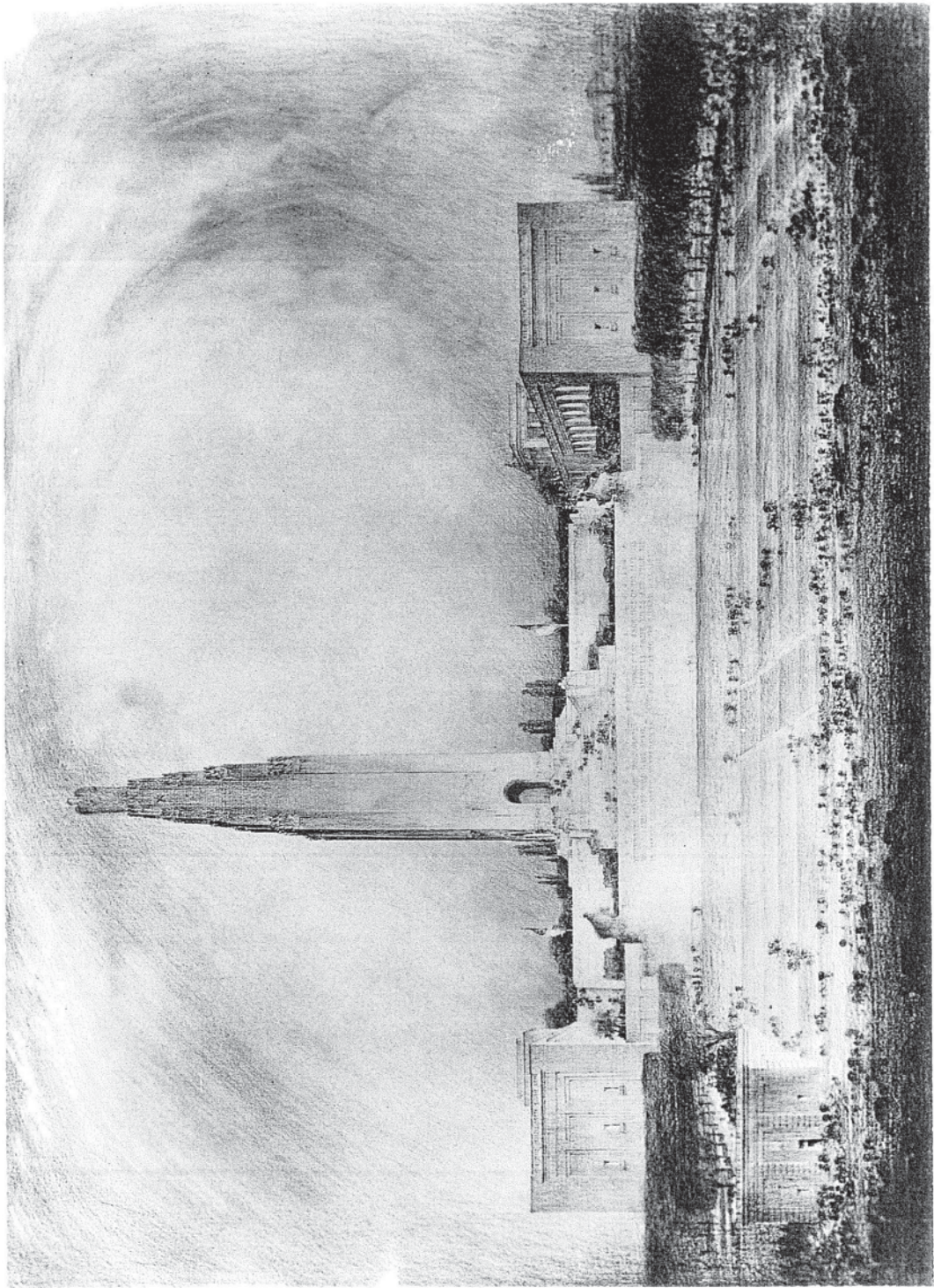


Fig. 12. Delk with Armstrong & De Gelleke, Liberty Memorial, Front Elevation, 1921. Competition Drawing (Sixth Place).

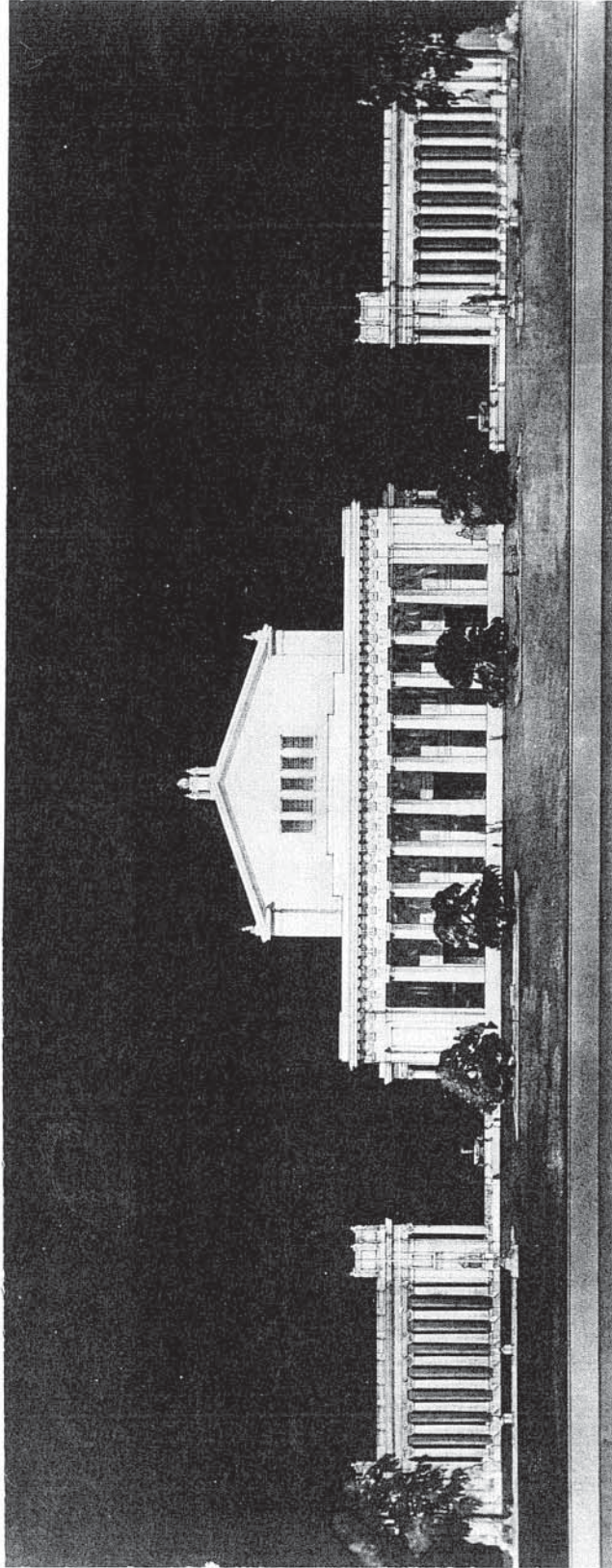


Fig. 13. DeIk with Armstrong & De Gelleke, Liberty Memorial, Elevation of Art Center Buildings, 1921. Competition Drawing.

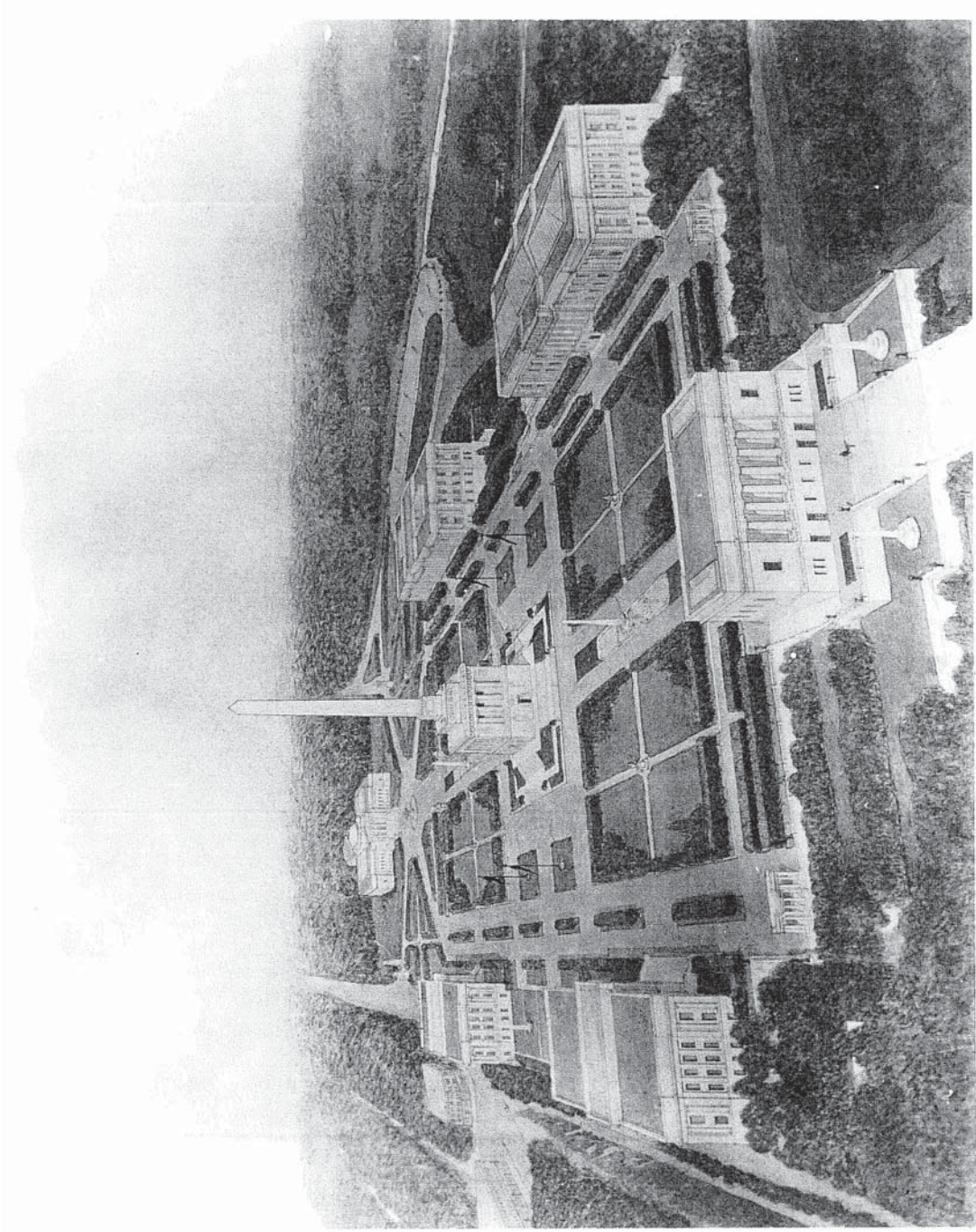


Fig. 14. Wight & Wight, Liberty Memorial, Perspective Plan, 1921. Competition Drawing (Seventh Place).

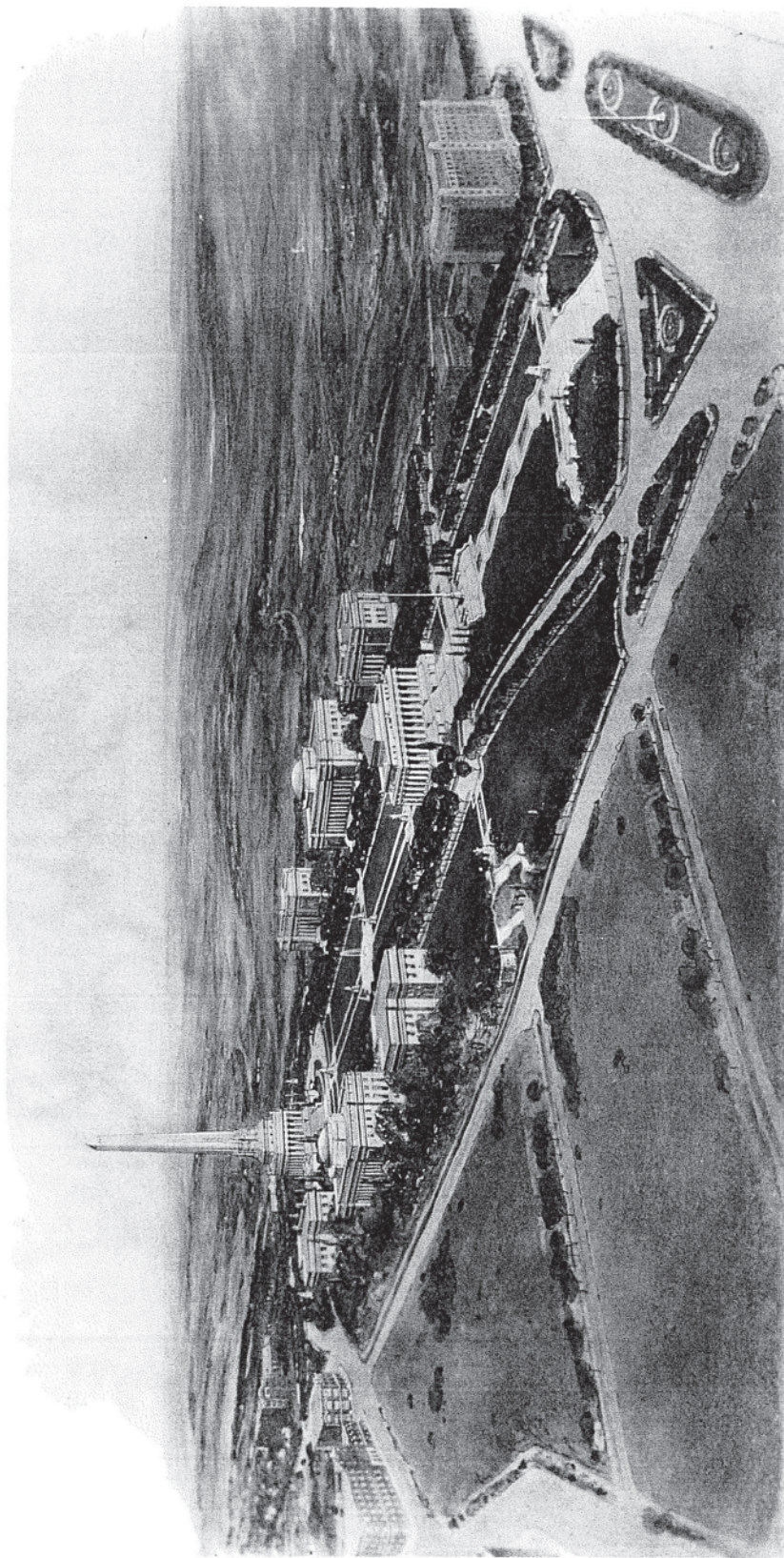


Fig. 15. Hoit, Price & Barnes, Liberty Memorial, Perspective Plan, 1921. Competition Drawing (Eighth Place).

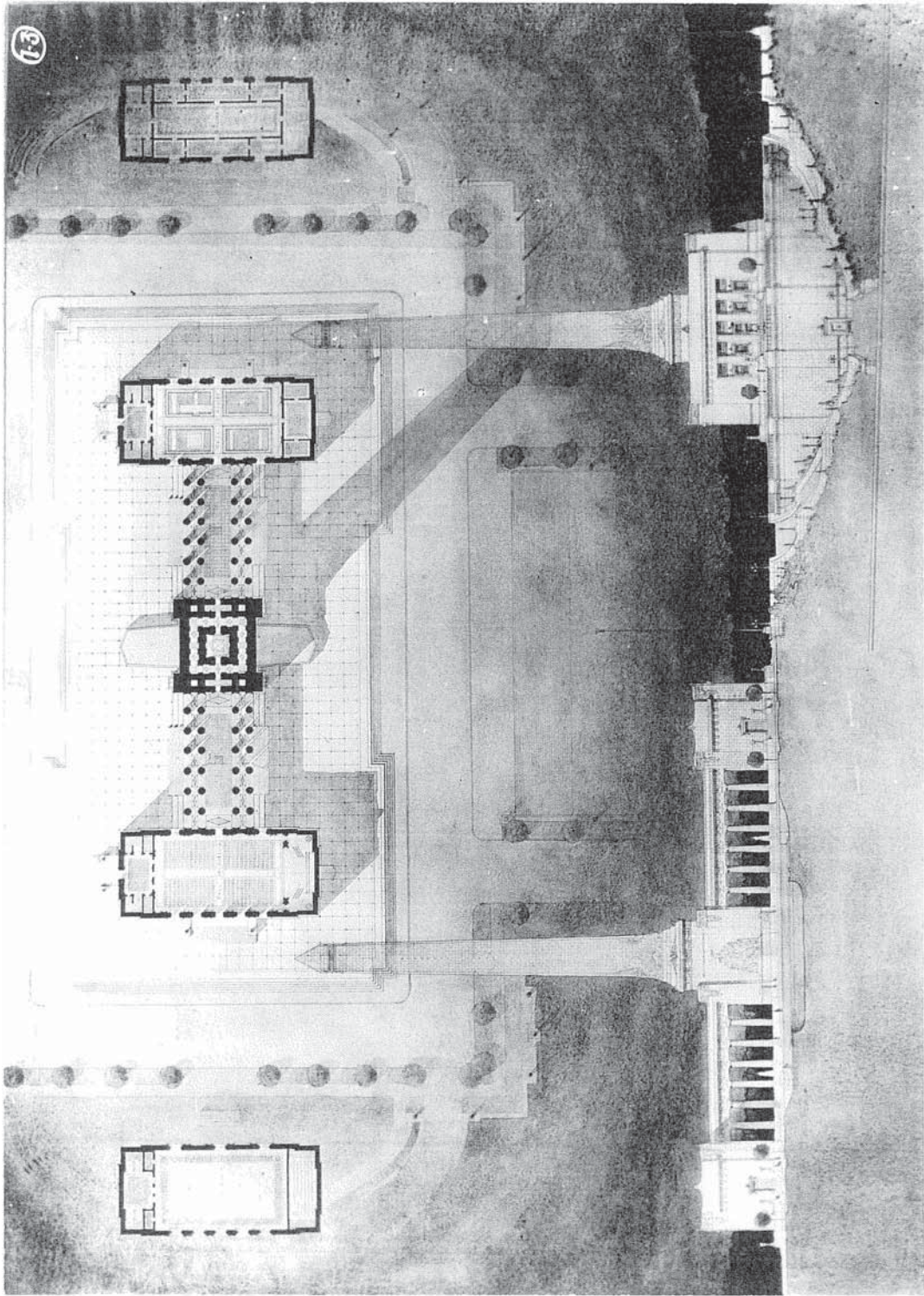


Fig. 16. Brostrom & Drotts, Liberty Memorial, General Plan and Front and Side Elevations of Monument, 1921. Competition Drawings (Ninth Place).

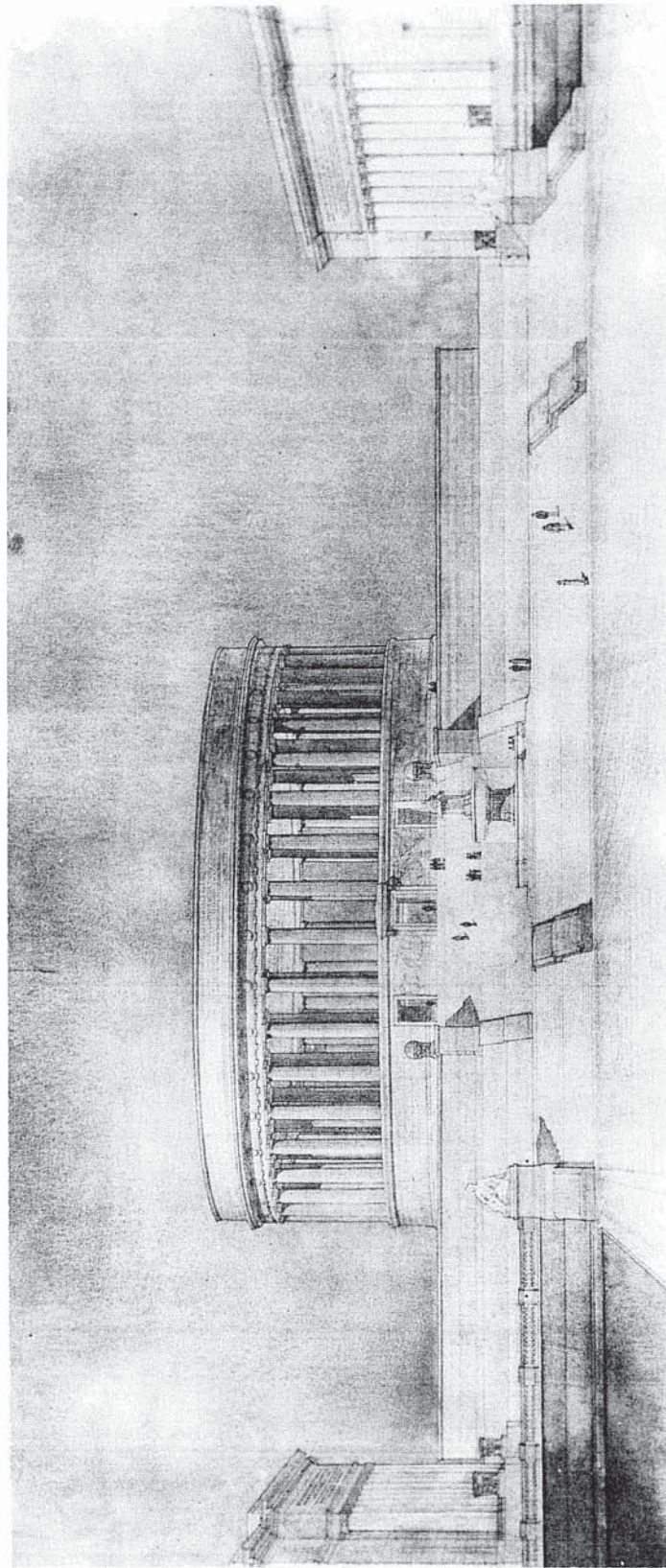


Fig. 17. Bliss & Faville, Liberty Memorial, Front Elevation, 1921. Competition Drawing
Tenth Place).

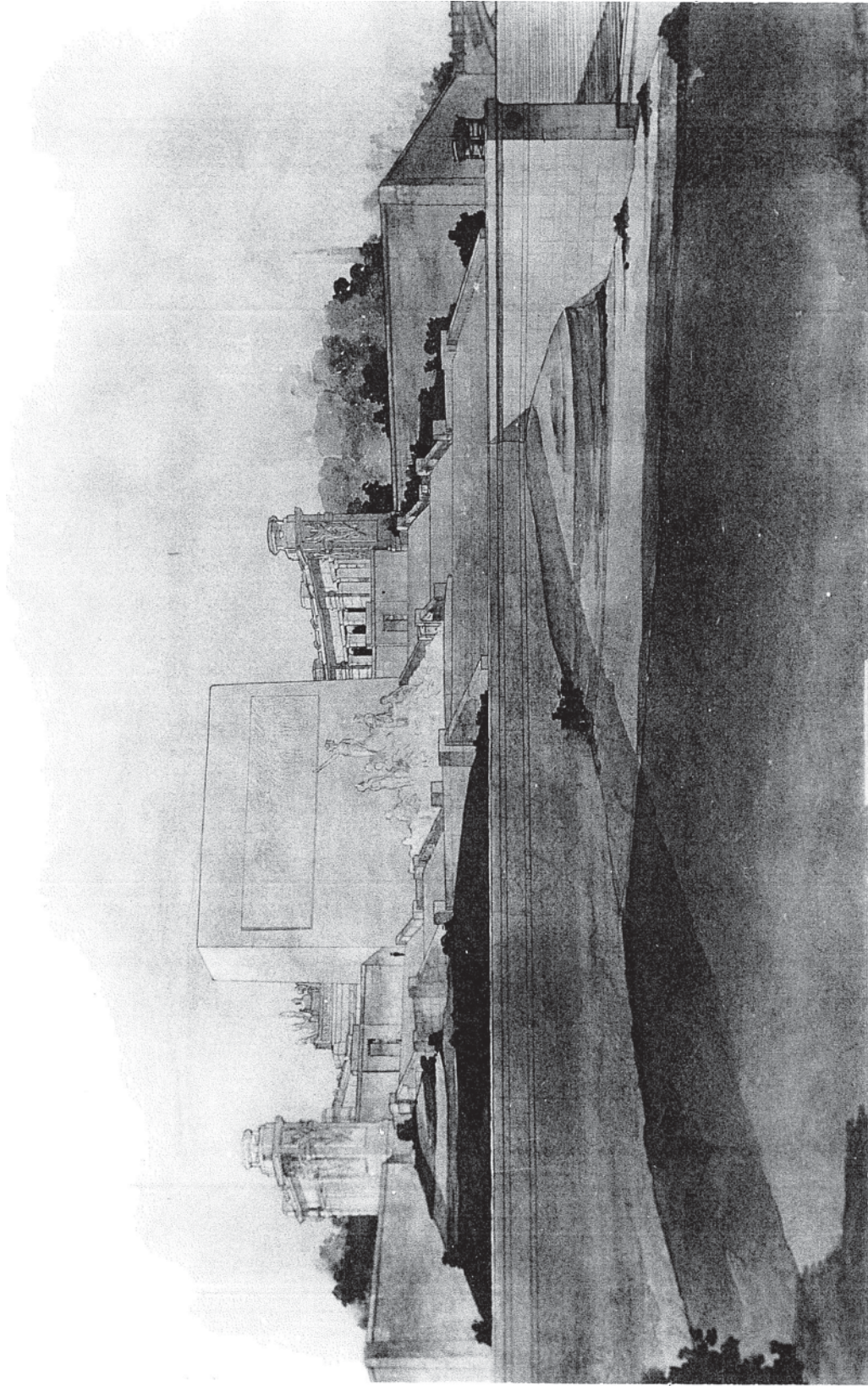


Fig. 18. Kurfiss, Liberty Memorial, Front Perspective, 1921. Competition Drawing (Eleventh Place).

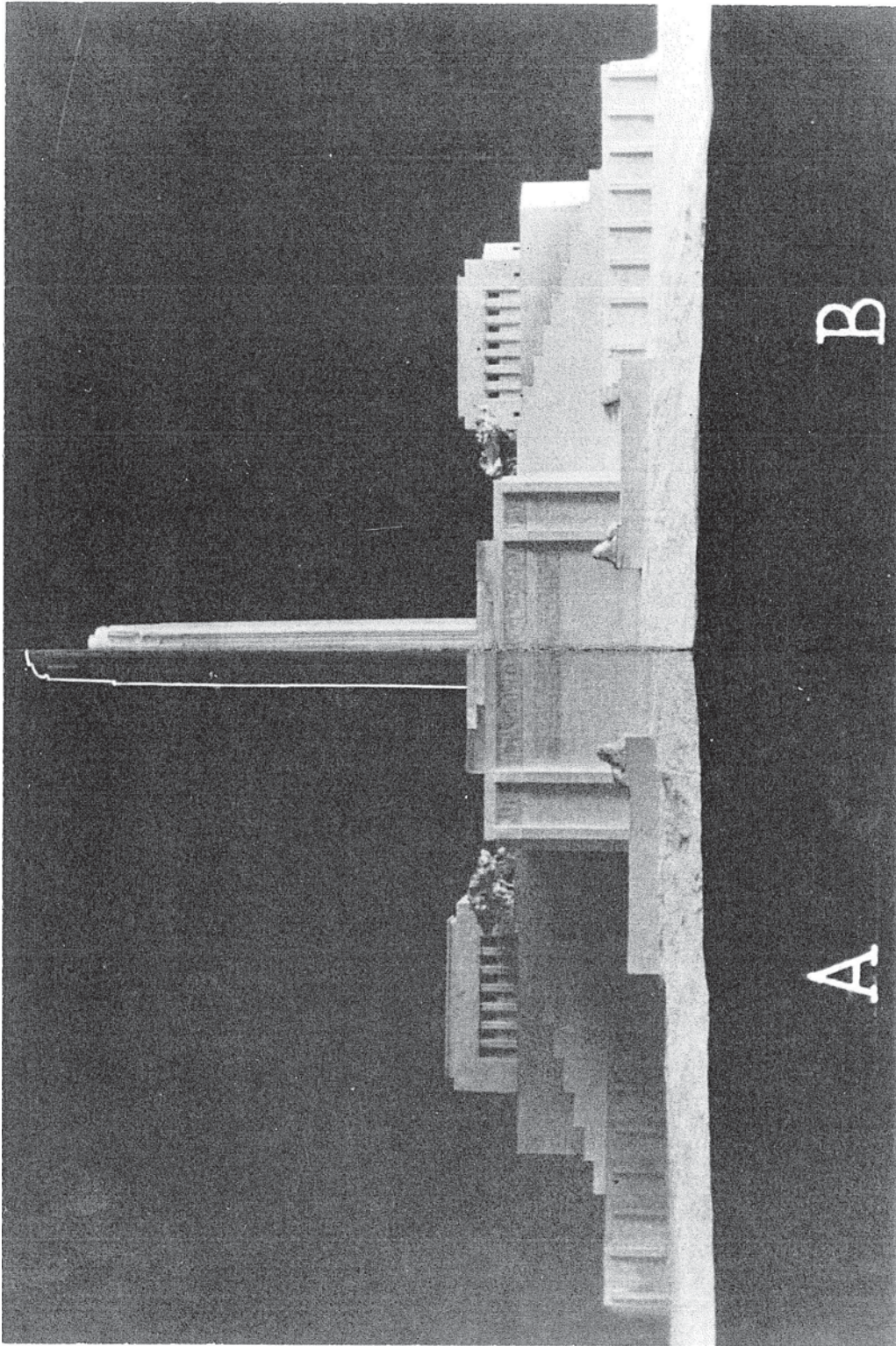


Fig. 19. Magonigle's 1922 Liberty Memorial Model of Scheme B with Enlarged Scheme A Superimposed. ("Minutes," 328).

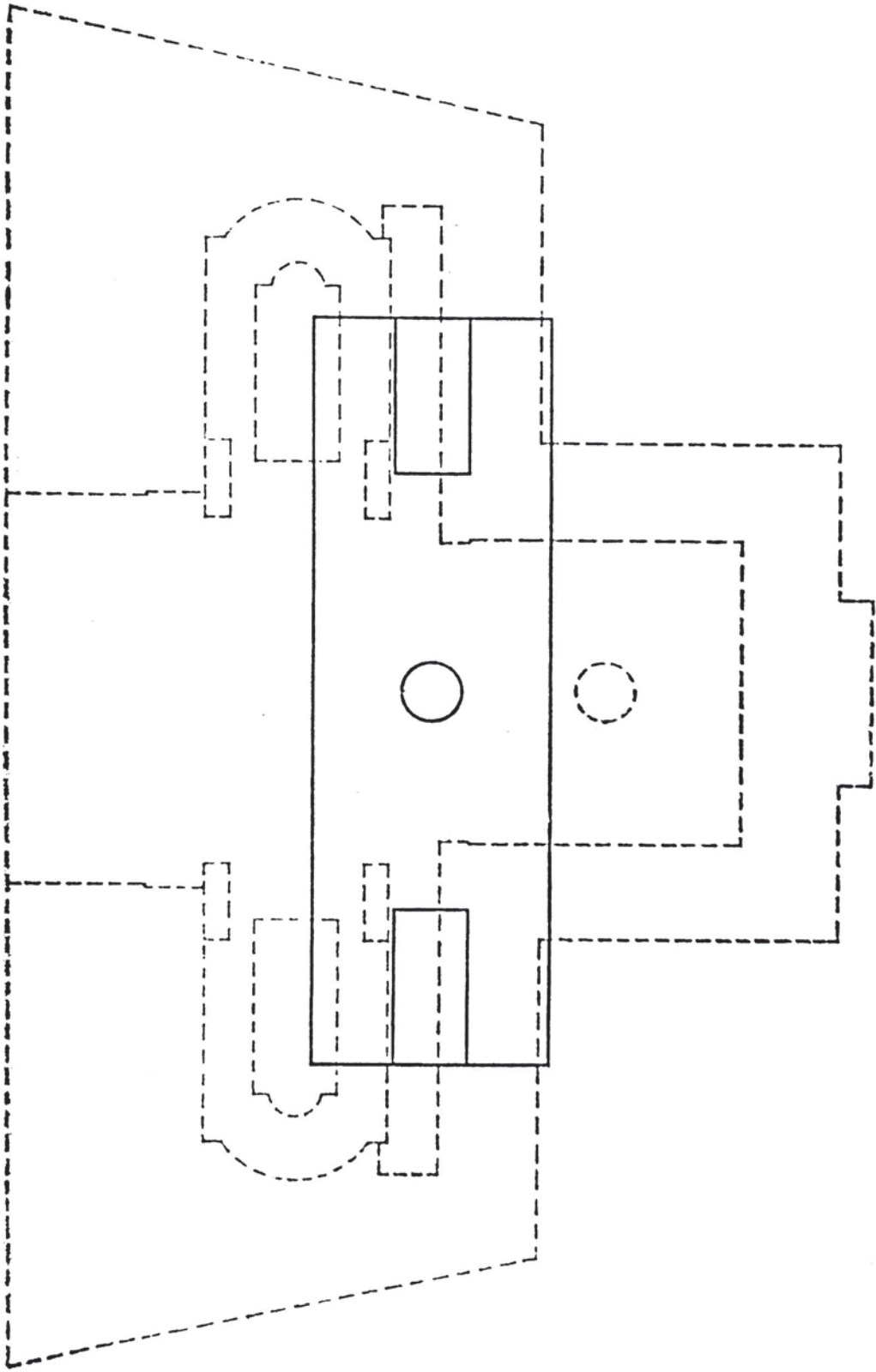
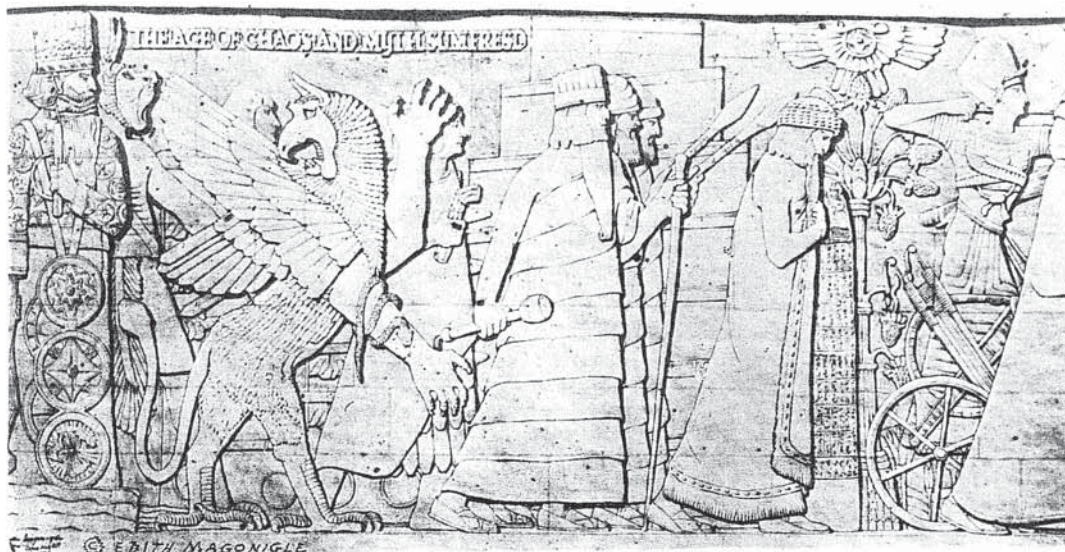


Fig. 20. Magonigle's Reduced Liberty Memorial Plan D Superimposed over Plan B. ("Minutes," 418).



At the easterly end of Mrs. Magonigle's great frieze, is Marduk; next to the right, Gilgamesh, the Mesopotamian Hercules; the Dragon of Chaos; the Sumerians; Eannatum; Sargon I, with Naram Sin, his son, and his chief counsellor. Behind these figures is the seven-storied Ziggurat, the type of the Tower of Babel. Then appear Hammurabi, a great lawgiver; and Rameses the Great



Moses; a Hittite prince; a Philistine; two Assyrian monarchs; Tushratta, King of Mitanni; Nebuchadnezzar with two attendants, typifying the Neo-Babylonian Empire; Gautama Buddha; Cyrus the Persian; bringing us down to the Nativity, shown at the top of the following page

Fig. 21. Edith Magonigle, Drawings for Liberty Memorial Frieze. (Saylor, Architecture, 1927, 6).

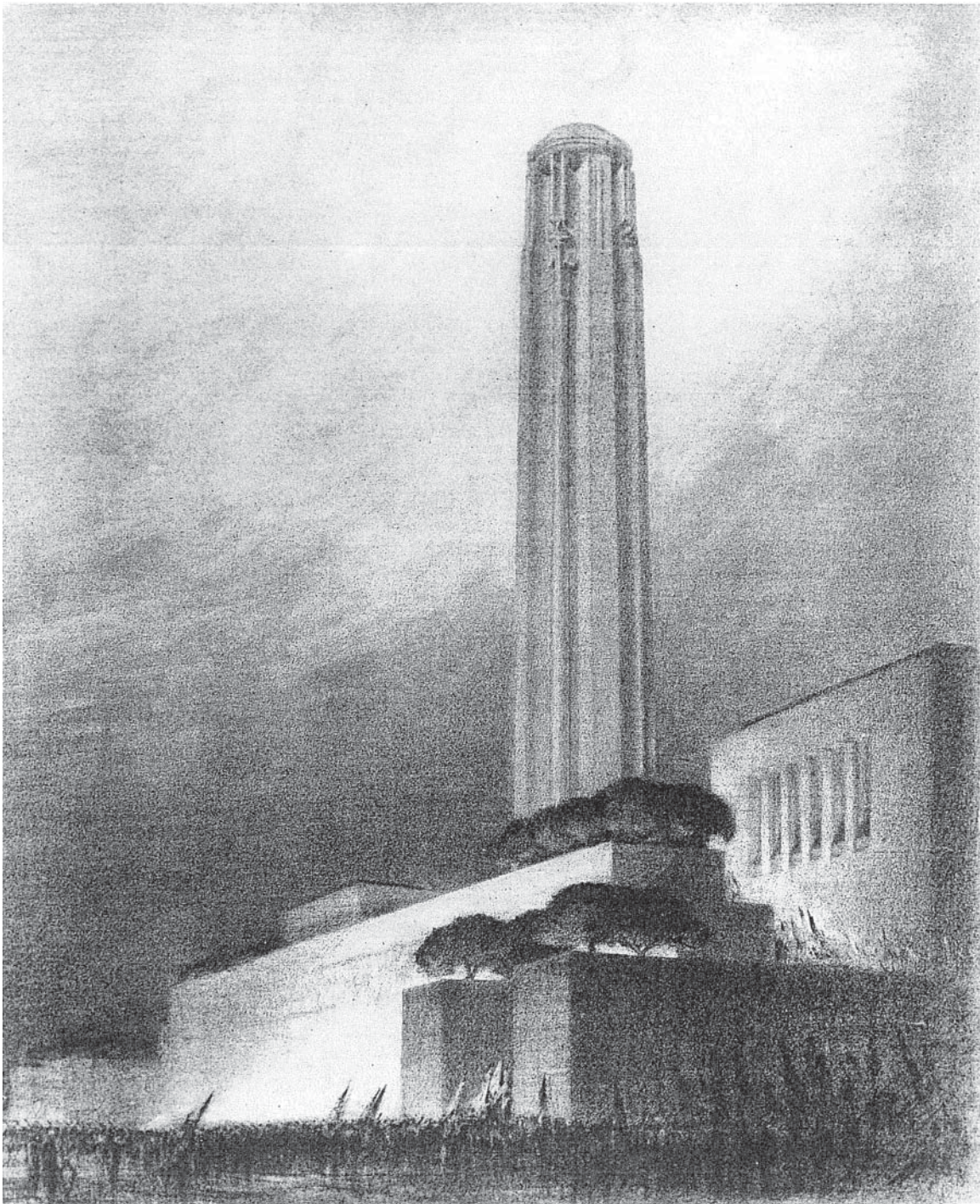
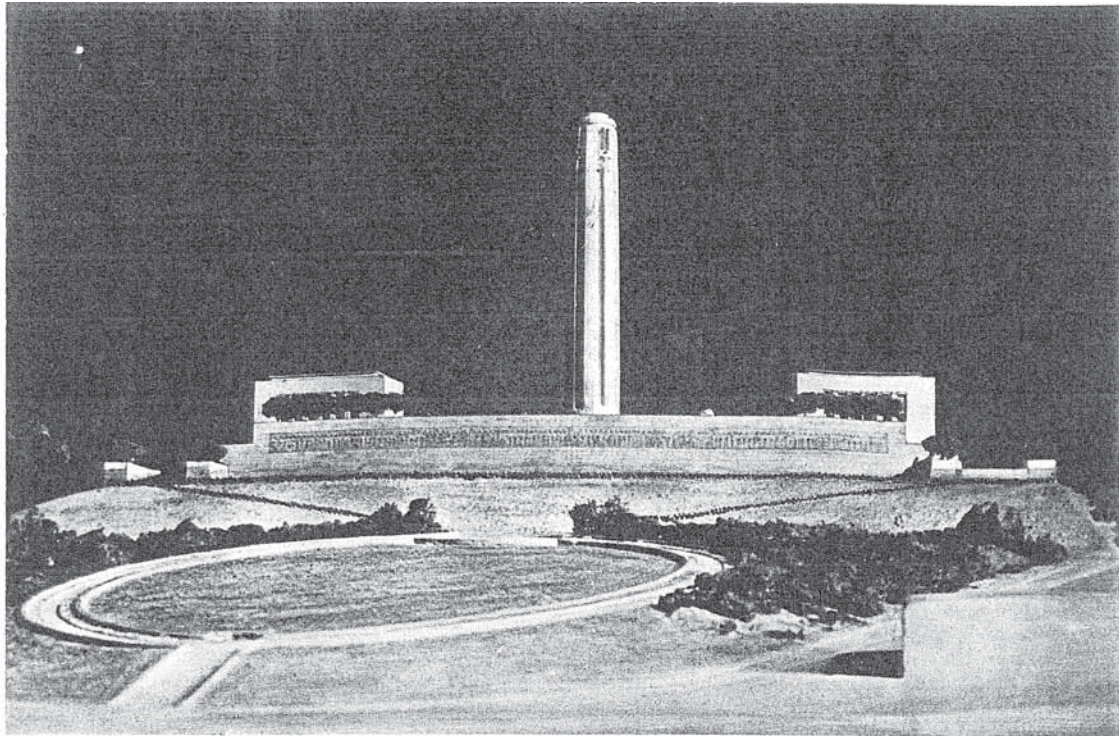


Fig. 22. Magonigle, Liberty Memorial, View from the Northwest, 1926. Drawing by Hugh Ferriss (Hewlett, Journal of A.I.A., 1926).



The North Front, as it will appear when the foreground grading and planting is completed. This is from a photograph of the final model. It is interesting to compare the extreme simplicity of the final design with the competition drawing of the same front, shown below

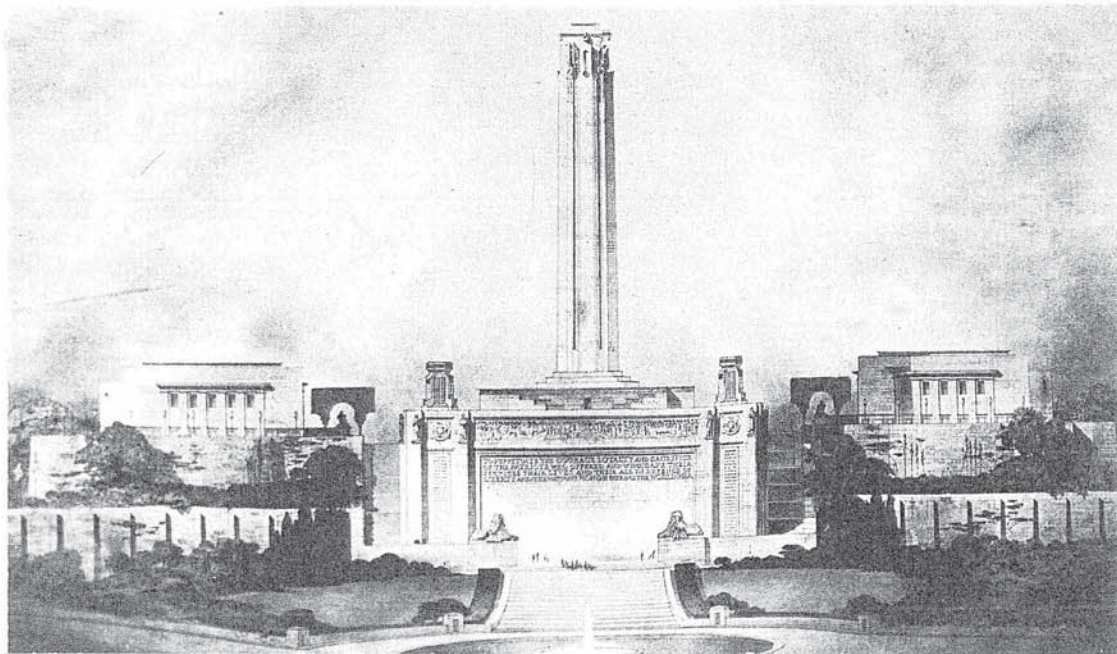


Fig. 23. Magonigle, Liberty Memorial Final Model, 1926 and Competition Drawing, 1921. (Saylor, Architecture, 1927, 1).

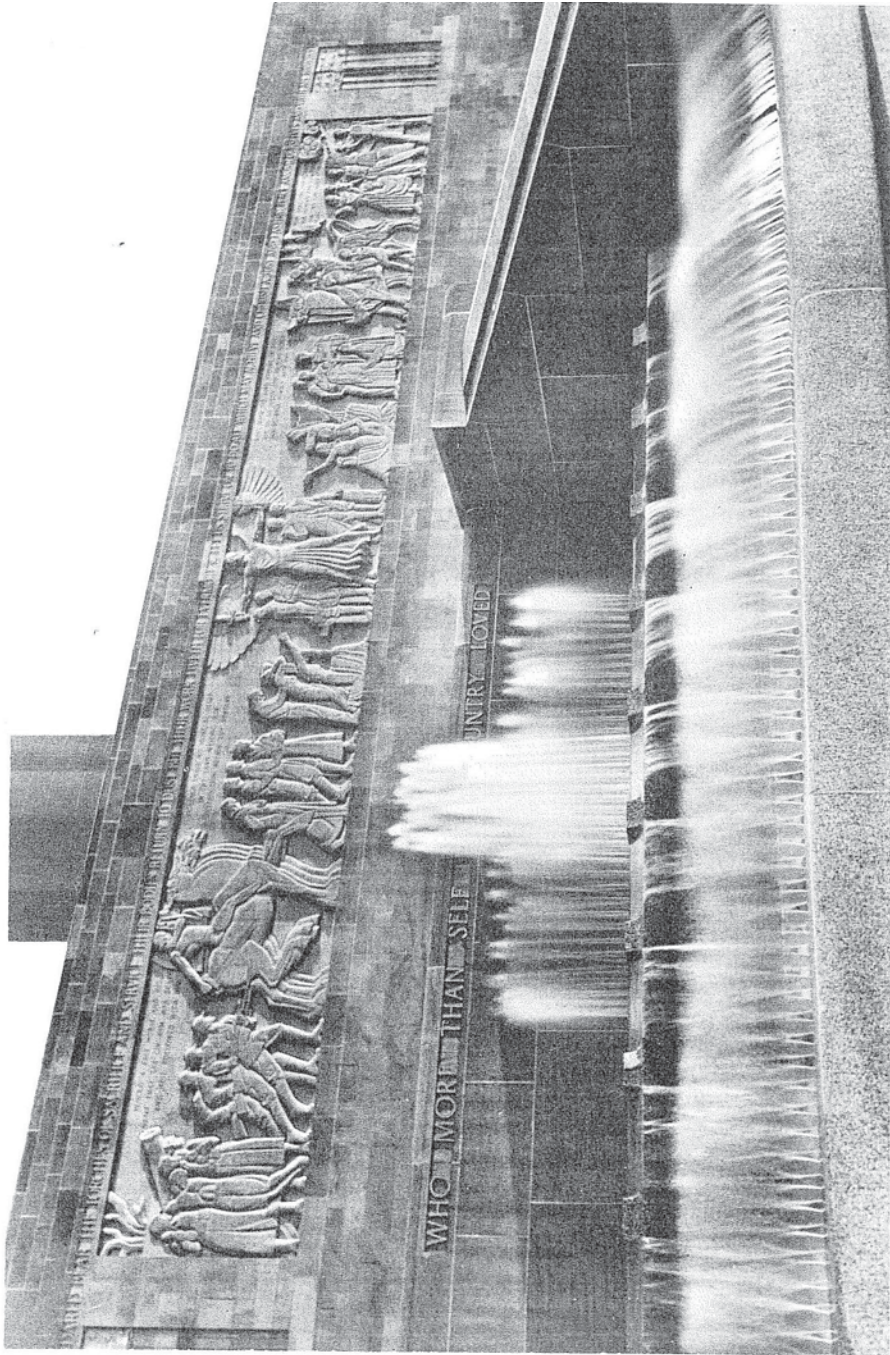


Fig. 24. Amateis, Liberty North Wall Frieze and Wight & Wight, Fountain, 1935.

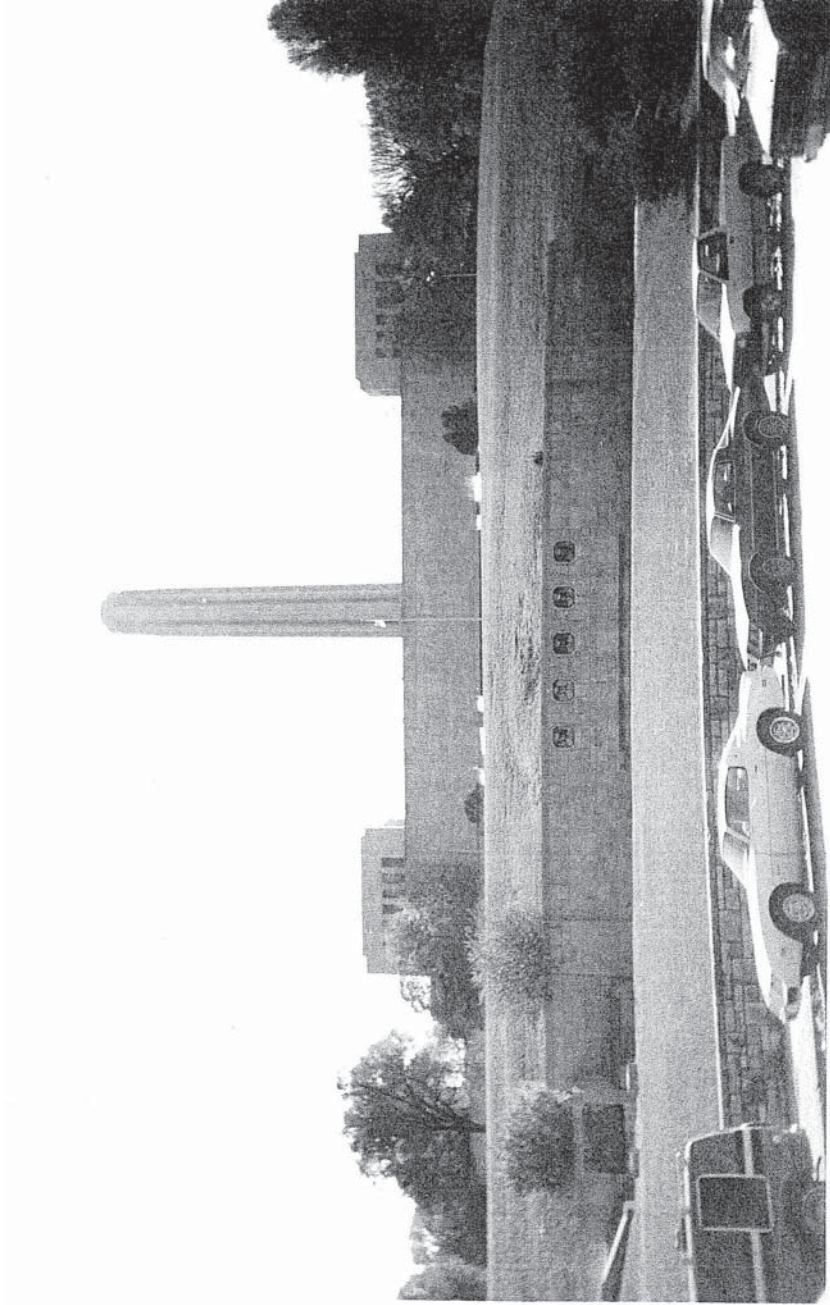


Fig. 25. Liberty Memorial with Dedication Mall, 1987. North View from Pershing Road (Photograph by the author).

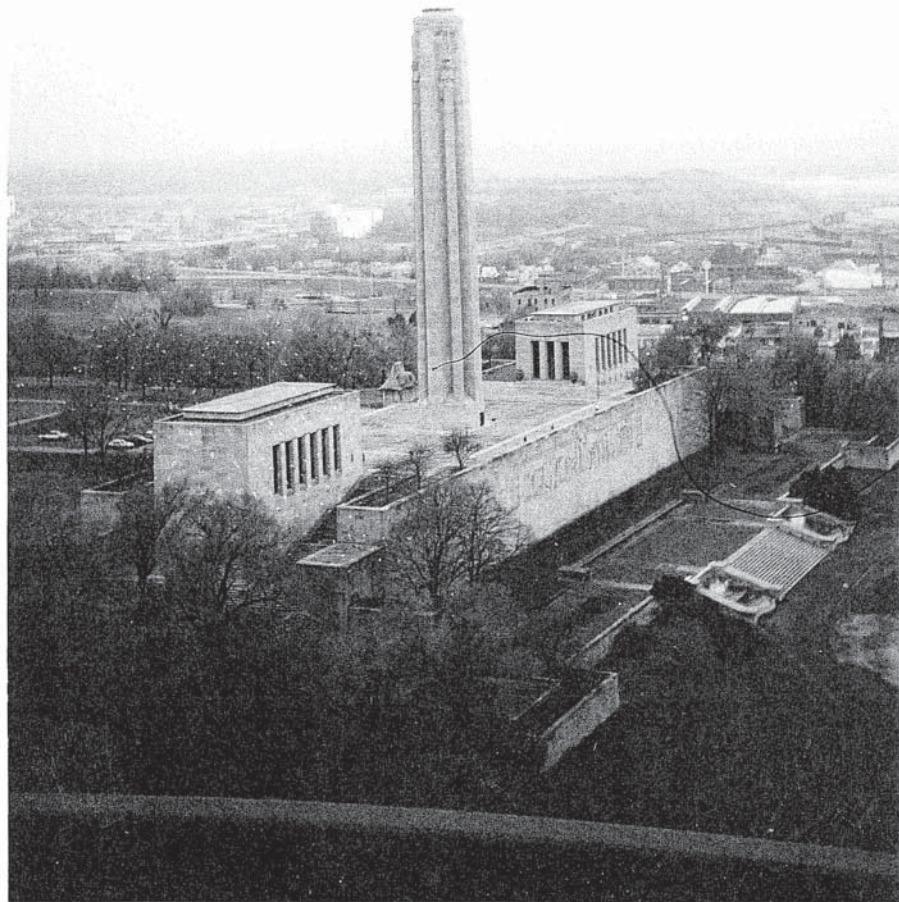


Fig. 26. Liberty Memorial, 1987. View from the Northeast
(Photograph by the author).



Fig. 27. H. Van Buren Magonigle, Architect of the Liberty Memorial, Kansas City, Missouri. (Kansas City Star, 7 November 1926).